



**PROVEN SOLUTIONS
FOR ELECTROPHORESIS
AND SAMPLE STORAGE**



Providing the Quality Tools You Need and Can Rely On to Get the Results you Expect



Hoefer, established in 1967, specializes in developing and manufacturing tools and complimentary accessories for gel electrophoresis and blotting applications. Our decades of experience allow us to deliver products that are intelligently designed for top performance and ease of use.



Our premium products can be found in laboratories around the world and are proven to deliver consistent and reproducible protein and nucleic acid electrophoretic separations. Scientists can trust that Hoefer instruments, accessories, and consumables will meet the highest standards of excellence.



- Combines the advantages of small format and efficient cooling for rapid screening and rapid separation—SE250 and SE260 (pages 3)
- A large range of vertical and horizontal electrophoresis solutions to meet every application and budget (pages 2-16)
- Quickly and efficiently transfers proteins and nucleic acids with wet tank blotting unit -TE22 (page 19)
- Sample storage consumables and equipment, to further help our customers in sample management for their research and discovery work, whether in clinical research, biologics discovery or compound management. (Page 31-38)



We look forward to partnering with you for all of your electrophoresis and sample storage needs and thank you in advance for your support.



For technical assistance please contact us toll free at (800) 813-0488, reach us by e-mail at support@hoeferinc.com, or visit www.hoeferinc.com.

Protein Electrophoresis

Electrophoresis Selection Guide	01
SE300 miniVE™ Integrated Vertical Electrophoresis and Blotting Unit	02
SE250/SE260 Mighty Small™ II Mini Vertical Electrophoresis Units	03
Accessories for miniVE, SE260, and SE250	04
SE600 Series Vertical Electrophoresis Systems	05
SE400 Series Vertical Electrophoresis Systems	06
Accessories for SE660, SE600X Chroma, SE600, SE640, SE410, and SE400	07
Gel Casters	09
SG Series Gradient Makers	10
Mighty Small Precast Gels	11

Nucleic Acid Electrophoresis

Horizontal Electrophoresis Selection Guide	13
HE Series Agarose Electrophoresis Unit	14
SUB Series Horizontal Electrophoresis.....	15

Blotting

Blotting Unit Selection Guide	17
Semi-Dry Transfer	18
Wet Tank Transfer	19
Western Blotting System Packages	20

Power Supplies

Power Supplies	21
----------------------	----

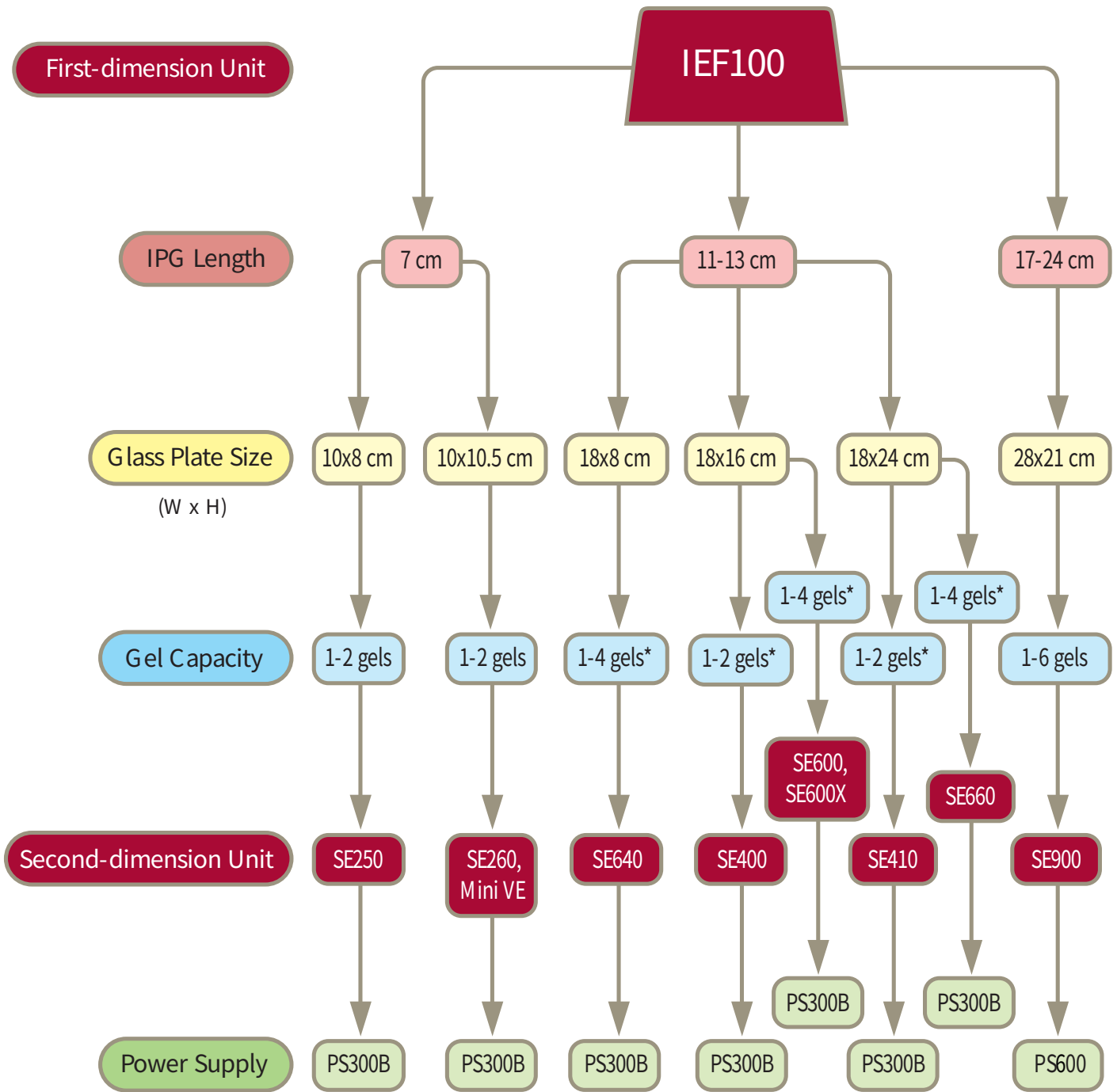
Imaging Systems

FPGD2 FlexPro Gel Doc imaging System	23
FXGD3 FlexSecure Gel Doc imaging System	25
Chemi FX Multi Fluorescence and Chemiluminescence Imaging Systems	27
GelSys-Image Capture Software	29
GelTools-Analysis Software	30

Sample Storage Solutions

Tri-coded Sample Storage Tube	31
Barcode Reader	32
HandheldCap 8/6 Capper/Decapper	34
AutoCap 96/84 Capper/Decapper	35
AutoLaser Marking Machine	36
Smart TubeLaser	37

Electrophoresis Selection Guide



*With optional divider plate

SE300 miniVE™ Integrated Vertical Electrophoresis and Blotting Unit



SE300

Features and Benefits

- Quick, excellent results using minimal buffer
- Passive cooling produces gels with straight lanes and sharp bands
- Cast your own or use precast gels from a variety of manufacturers
- Transfer up to 4 gels in 45 minutes with only 300 ml buffer using optional SE302 Blot Modules
- Designed for use with a wide variety of precast gels

Specifications

Glass Plate Size (w x h)	10 x 10.5 cm or 10 x 8 cm
Spacers	0.75 mm, 1.0 mm, 1.5 mm
Maximum Power Settings	
for Electrophoresis	500 V and 25 W per module
for Blotting	400 mA and 15 W per module
Maximum Temperature	45°C
Humidity	Up to 80%
Unit Dimensions (w x h x d)	19.2 x 17.2 x 18.8 cm
Safety Certifications	EN61010-1, UL61010A-1 CSA C22.2 1010.1, CE

Ordering Information

Cat. #	Description
SE300-10A-1.0	miniVE Integrated Vertical Electrophoresis Unit, Complete
SE300	miniVE Integrated Vertical Electrophoresis Unit, Basic
SE302	miniVE Blot Module



SE302

Basic Unit Includes:

- Lower Buffer Chamber (tank)
- Safety Lid with High Voltage Leads
- Gel Modules with Gaskets–2 assemblies

Complete Unit Includes:

- Basic Unit
- Glass Plates 10 x 10.5 cm
- T-Spacers
- Combs

Blot Module Includes:

- Blot Module
- Dacron Sponges, 6 mm thick–4 pcs
- Blotter Paper–25 sheets

SE250/SE260 Mighty Small II Mini Vertical Electrophoresis Units

Features and Benefits

- Efficient active cooling ensures sharp bands
- Quick and easy to assemble, requires minimal buffer
- Run up to two gels at one time under identical conditions
- Easily upgradable from SE250 to the SE260 (with optional accessories)
- Supports a wide variety of precast gels



SE250

Specifications

Glass Plate Size (w x h)

SE250.....10 x 8 cm

SE26010 x 10.5 or 10 x 8 cm

Spacers.....0.75 mm, 1.0 mm, 1.5 mm

Maximum Power Settings.....500 V, 500 mA, 12 W

Maximum Temperature.....45°C

Humidity.....Up to 80%

Unit Dimension (w x h x d).....16.5 x 16 x 16 cm

Safety CertificationsEN61010-1, UL61010A-1,
CSA C22.2 1010.1, CE



SE260

Ordering Information

Cat.#	Description
SE250-10A-1.0	Mighty Small II Mini Vertical Electrophoresis Unit, Complete
SE250-CS	SE250 Complete Unit Without Combs and Spacers
SE250	SE250 Basic Unit
SE260-10A-1.0	Mighty Small II Deluxe Mini Vertical Electrophoresis Unit, Complete
SE260-CS	SE260 Complete Unit Without Combs and Spacers
SE260B	SE260 Basic Unit

Basic Unit Includes:

- Lower Buffer Chamber
- Upper Buffer Chamber/Cooling Core
- Safety Lid with High Voltage Leads
- Spring Clamps–4 pcs

Complete Unit Includes:

- Basic Unit (SE250 include Plates)
- Combs
- T-Spacers
- Gel caster

Accessories: miniVE™, SE260, and SE250

Combs

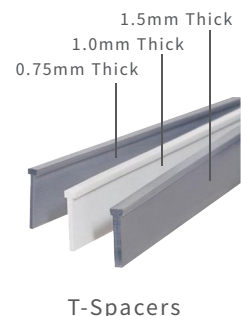
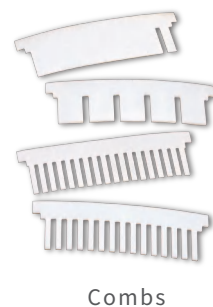
Cat. #	# of Wells	Thickness (mm)	Well Width (mm)	Well Volume (µl per 1 mm depth)
Standard Combs		Standard combs produce maximum well depths of 13 mm.		
SE211A-5-.75	5	0.75	13	9.8
SE211A-5-1.0	5	1	13	13
SE211A-5-1.5	5	1.5	13	19.5
SE211A-9-1.0	9*	1	5.8	5.8
SE211A-10-.75	10	0.75	4.8	3.6
SE211A-10-1.0	10	1	4.8	4.8
SE211A-10-1.5	10	1.5	4.8	7.2
SE211A-15-.75	15	0.75	2.9	2.2
SE211A-15-1.0	15	1	2.9	2.9
SE211A-15-1.5	15	1.5	2.9	4.4
SE211A-18-1.0	18*	1	2.9	2.9
Preparative Combs		Preparative Combs form 1 large preparative well plus 1 small reference well.		
SE211A-R-.75	1/1	0.75	68/5	51/3.8
SE211A-R-1.0	1/1	1	68/5	68/5
SE211A-R-1.5	1/1	1.5	68/5	120/7.5

T-Spacers

Cat. #	Thickness (mm)	Length (cm)	Width (cm)	Qty.
SE2119T-2-.75	0.75	8	1	2
SE2119T-2-1.0	1	8	1	2
SE2119T-2-1.5	1.5	8	1	2
SE2619T-2-.75	0.75	10.5	1	2
SE2619T-2-1.0	1	10.5	1	2
SE2619T-2-1.5	1.5	10.5	1	2

Glass and Alumina Plates

Cat. #	Description
SE202P-10	10 x 8 cm Rectangular Glass Plates–10 pcs
SE202GN-5	10 x 8 cm Notched Glass Plates–5 pcs
SE262P-5	10 x 10.5 cm Rectangular Glass Plates–5 pcs
SE262GN-5	10 x 10.5 cm Notched Glass Plates–5 pcs
SE202N	10 x 8 cm Notched Alumina Plate
SE202N-10	10 x 8 cm Notched Alumina Plates–10 pcs
SE262N-5	10 x 10.5 cm Notched Alumina Plates–5 pcs



SE600 Series Vertical Electrophoresis Systems

Features and Benefits

- Gels are fully submerged for greater temperature equilibration
- Produces straight lanes and sharp, well-defined bands
- Run up to four gels at one time under identical conditions
- Accommodates denaturing and native PAGE gels for 2-D electrophoresis
- Run gels at uniform temperature from 1 to 45°C

Specifications

Glass Plate Size (w x h)

SE660.....	18 x 24 cm, 18 x 16cm, 18 x 8cm
SE600X.....	18 x 16cm, 18 x 8cm
SE600.....	18 x 16cm, 18 x 8cm
SE640.....	18 x 8cm

Spacers.....0.75 mm, 1.0 mm, 1.5 mm

Maximum Power Settings.....1000 V, 500 mA, 50 W

Maximum Temperature.....45°C

Humidity.....Up to 80%

Unit Dimension (w x h x d).....16.5 x 16 x 16 cm

Safety Certifications.....EN61010-1, UL61010A-1
CSA C22.2 1010.1, CE

Ordering Information

Cat. #	Description
SE660-15-1.5	Tall Standard Dual Cooled Vertical Electrophoresis Unit, Complete
SE600X-15-1.5	Deluxe Dual Cooled Vertical Electrophoresis Unit, Complete
SE600-15-1.5	Standard Dual Cooled Vertical Electrophoresis Unit, Complete
SE640-15-1.5	Wide-Mini Vertical Electrophoresis Unit, Complete

* Basic units are available for selection (SE660, SE600, SE600X, SE640)

Basic Unit Includes:

- Buffer Chamber
- Safety Lid w/High Voltage Leads
- Heat Exchanger
- Glass Plates
- Dual Gel Casting Stand
- Clamp Assemblies

Complete Unit Includes:

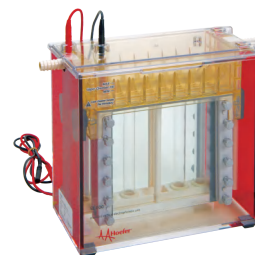
- Basic Unit
- Combs
- Spacers



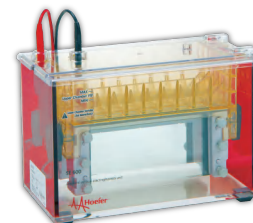
SE660



SE600X



SE600



SE640

SE400 Series Vertical Electrophoresis Systems

Features and Benefits

- The rugged injection molded construction is durable and assembles easily
- Run two gels with the addition of a divider plate
- Built-in casting stand seals leak free
- Plates, clamps, spacers, and combs are interchangeable with the SE600 Series

Specifications

Glass Plate Size (w x h)	
SE410.....	18 x 24 cm
SE400.....	18 x 16cm
Spacers.....	0.75 mm, 1.0 mm, 1.5 mm
Maximum Power Settings.....	500 V, 60 mA, 20 W
Maximum Temperature.....	45°C
Humidity.....	Up to 80%
Unit Dimension (w x h x d).....	16.5 x 16 x 16 cm
Safety Certifications.....	EN61010-1, UL61010A-1 CSA C22.2 1010.1, CE



SE410

Ordering Information

Cat. #	Description
SE410-15-1.5	Tall Air- Cooled Vertical Electrophoresis Unit, Complete
SE410	Tall Air-Cooled Vertical Electrophoresis Unit, Basic
SE400-15-1.5	Air- Cooled Vertical Electrophoresis Unit, Complete
SE400	Air-Cooled Vertical Electrophoresis Unit, Basic



SE400

Basic Unit Includes:

- Buffer Chamber
- Glass Plates
- Clamp Assemblies
- Safety Lid w/High Voltage Leads
- Dual Gel Casting Stand

Complete Unit Includes:

- Basic Unit
- Combs
- Spacers

Accessories: SE660, SE600X Chroma, SE600, SE640, SE410, and SE400

Combs

Cat. #	# of Wells	Thickness (mm)	Well Width (mm)	Well Volume (µl per 1 mm depth)	Qty.
Our combs are precision machined from Teflon® which is highly resistant to acids, bases, and all commonly used buffer systems.					
Standard Combs					
SE511-10-.75	10	0.75	8.3	6.2	1
SE511-10-1.0	10	1	8.3	8.3	1
SE511-10-1.5	10	1.5	8.3	12.4	1
SE511-12-.75	12	0.75	7.6	5.8	1
SE511-12-1.0	12	1	7.6	7.7	1
SE511-12-1.5	12	1.5	7.6	11.5	1
SE511-15-.75	15	0.75	5.7	4.3	1
SE511-15-1.0	15	1	5.7	5.7	1
SE511-15-1.5	15	1.5	5.7	8.6	1
SE511-20-.75	20	0.75	4.1	3.1	1
SE511-20-1.0	20	1	4.1	4.1	1
SE511-20-1.5	20	1.5	4.1	6.2	1
SE511-28-.75	28	0.75	2.7	2.1	1
SE511-28-1.0	28	1	2.7	2.7	1
SE511-28-1.5	28	1.5	2.7	4.1	1
Preparative Combs have adjustable comb backs (10, 15, and 25 mm depth) and form 1 large preparative well plus 1 or 2 small reference wells.					
Preparative Combs					
SE511-R-.75	1/1	0.75	121/6	90/4	1
SE511-R-1.0	1/1	1	121/6	120/6	1
SE511-R-1.5	1/1	1.5	121/6	183/9	1
SE511-DR-.75	1/2	0.75	113/6	85/4	1
SE511-DR-1.0	1/2	1	113/6	112/6	1
SE511-DR-1.5	1/2	1.5	113/6	171/9	1

Spacers

Cat. #	Thickness (mm)	Length (cm)	Width (cm)	Qty.
SE6419-2-.75	0.75	8	2	2
SE6419-2-1.0	1	8	2	2
SE6419-2-1.5	1.5	8	2	2
SE6119-2-.75	0.75	16	2	2
SE6119-2-1.0	1	16	2	2
SE6119-2-1.5	1.5	16	2	2
SE6619-2-.75	0.75	24	2	2
SE6619-2-1.0	1	24	2	2
SE6619-2-1.5	1.5	24	2	2
SE6118-2-1.0	1	16	1	2
SE6118-2-1.5	1.5	16	1	2

Glass Plates

Cat. #	Description
SE6402	18 x 8 cm Regular-2 pcs
SE6402LF	18 x 8 cm Low Fluorescence-2 pcs
SE6402D	18 x 8 cm Divider Plate, Notched
SE6102	18 x 16 cm Regular-2 pcs
SE6102LF	18 x 16 cm Low Fluorescence-2 pcs
SE6102D	18 x 16 cm Divider Plate, Notched
SE6602	18 x 24 cm Regular-2 pcs
SE6602LF	18 x 24 cm Low Fluorescence-2 pcs
SE6602D	18 x 24 cm Divider Plate, Notched

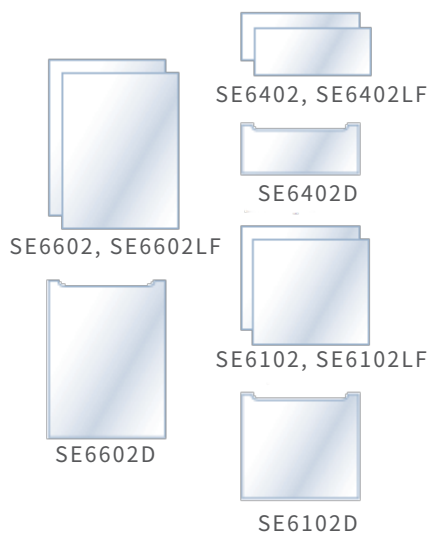
Divider Plates Double Gel Capacity

Run as many as four 0.75, 1.0, or 1.5 mm thick gels on SE600 Series units and two gels on the SE400 Series at one time under identical conditions.

How it works: Insert a divider plate between the glass plates that make up a single gel sandwich. Place spacers on each side of the divider plate to form two gel cavities for pouring gels. This two gel “club sandwich” fits into the same casting stand and seals perfectly.



Divider Plate



Gel Casters

Multiple Gel Casters

- Pour uniform gels from the top; pump gradient gels into an inlet port at the bottom of the unit
- Sandwiches fill at the same time at the same rate from the same solution.

The result: identical gels.

- Glass plate sandwiches seal leak free without the use of messy grease or tape
- Once cast, gels can be wrapped in plastic and refrigerated for several weeks



SE275

SE215

Dual Gel Caster

- Cast one or two gels
- Double the capacity with optional divider plates



SE675

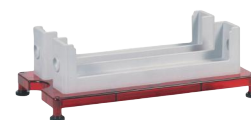
SE615

Ordering Information

Cat. #	Description
SE215	Ten Gel Caster for 10 x 8 cm plates Includes: 10 x 8 cm Rectangular Glass Plates–20 pcs 10 x 8 cm Notched Alumina Plates–10 pcs
SE275	Four Gel Caster for 10 x 8 cm plates Includes: 10 x 8 cm Rectangular Glass Plates–10 pcs 10 x 8 cm Notched Alumina Plates–4 pcs
SE235	Four Gel Caster for 10 x 10.5 cm plates Includes: 10 x 10.5 cm Rectangular Glass Plates–5 pcs 10 x 10.5 cm Notched Alumina Plates–4 pcs
SE675	Four Gel Caster Includes Glass Plates, 18 x 16 cm–8 pcs
SE615	Ten Gel Caster Includes Glass Plates, 18 x 16 cm–20 pcs
SE245	Dual Gel Caster, For use with SE250, SE260
SE6015	Dual Gel Caster, For use with SE600 Series



SE245



SE6015

SG Series Gradient Makers

Ideal for generating gradients of polyacrylamide, sucrose, and cesium chloride

- Milled of heavy acrylic plastic with high quality, leak-free Teflon® valves
- Flat base provides stability on magnetic stir. Comes with a support rod for attaching to a ring stand
- Takes Luer or 4 mm ID tubing. With included adapters, can also take 2 mm ID or 22 gauge tubing

The 500 ml SG500 Gradient Maker is made of two cylindrical acrylic chambers joined and mounted on a flat acrylic base.

- An easy-to-use push-pull valve opens and closes the passage between the reservoir and mixing chambers
- Suitable for forming polyacrylamide gradients or buffer gradients used with medium to small chromatography columns
- Ideal for use with the SE615 Multiple Gel Caster

Ordering Information

Cat. #	Description
SG15	Gradient maker, 15 ml total volume
SG30	Gradient maker, 30 ml total volume
SG50	Gradient maker, 50 ml total volume
SG100	Gradient maker, 100 ml total volume
SG500	Gradient maker, 500 ml total volume



SG15



SG30



SG50



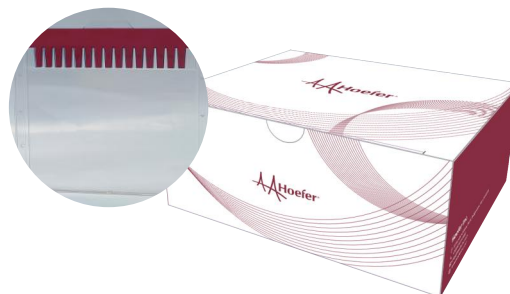
SG100



SG500

Mighty Small Precast Gels

Hoefer Mighty Small precast gels are high-performance mini polyacrylamide gels commonly used for protein separation. Utilizing the Bis-Tris buffer system, they effectively minimize protein modifications during electrophoresis, resulting in sharper and clearer protein bands with higher resolution.



Features and Benefits



High Loading Capacity

Maximum sample volume is 50 μ l



High Resolution

Upgraded Bis-Tris system for clearer, sharper separation bands and higher resolution



Ready to use and easy to store

No solution preparation or gel casting is required, saving time. Store at 2-8°C



Good Repeatability

Fully automated gel casting process, minimal batch-to-batch variation, high stability, and good repeatability



Highly Effective

Maximum 40 min for electrophoresis



Safe and non-toxic

No hazardous reagents need to be handled

Specifications

Plate Size: 10×8 cm

Wells: 12-well, 15-well

Concentration:

- Gradient gels: 4-12%, 4-20%
- Homogenous gels: 10%, 12%

Gel Size: 8.5×7 cm, 1mm thickness

System/Buffer: Bis-Tris System, MOPS Buffer

Loading Volume:

- For 12 wells: max 50 μ l (recommended: \leq 25 μ l)
- For 15 wells: max 30 μ l (recommended: \leq 15 μ l)

Compatible electrophoresis tanks

- **Hoefer:** SE260 Mighty Small™ Vertical Unit/miniVE™ Integrated Vertical and Blotting Unit
- **Bio-Rad:** Mini-PROTEAN Tetra Cell
- **Thermo:** Mini Gel Tank
- **Mini vertical electrophoresis tanks of other brands**

Protein Migration Guide

4-12% MOPS	4-20% MOPS	8% MOPS	10% MOPS	12% MOPS
270 Kd	270 Kd	270 Kd		185 Kd
185 Kd	185 Kd	185 Kd	185 Kd	140 Kd
140 Kd	140 Kd	140 Kd	140 Kd	115 Kd
115 Kd	115 Kd	115 Kd	115 Kd	80 Kd
80 Kd	80 Kd	80 Kd	80 Kd	65 Kd
65 Kd	65 Kd	80 Kd	65 Kd	50 Kd
50 Kd	50 Kd	65 Kd	50 Kd	40 Kd
40 Kd	40 Kd	50 Kd	40 Kd	30 Kd
30 Kd	30 Kd	40 Kd	30 Kd	25 Kd
25 Kd	25 Kd	30 Kd	25 Kd	15 Kd
15 Kd	15 Kd	25 Kd	15 Kd	10 Kd
	10 Kd			

Hofer Gels vs. Other Gels

Compared to other popular gels in the market, Hofer precast gels demonstrate a broader separation range (10-270 kDa), higher resolution, and more accurate molecular weight banding.

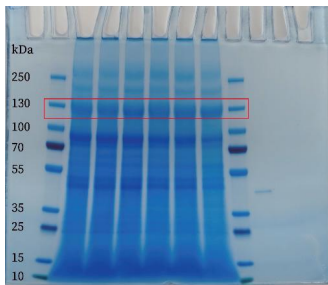


Fig 1. Hofer, 4-20% Bis-Tris

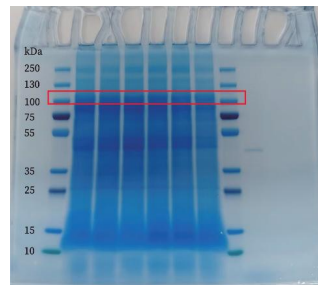


Fig 2. Brand X, 4-20% Bis-Tris

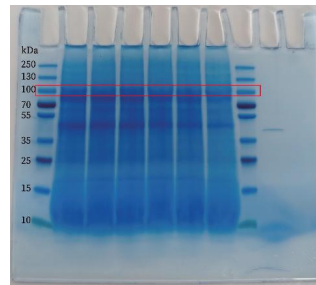


Fig 3. Brand W, 4-20% Tris-Gly

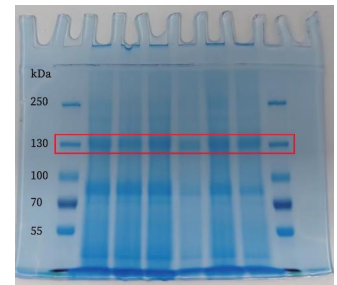


Fig 4. Hand-Cast Gels, 6% Tris-Gly

Ordering Information

Cat#	Description	Qty
MSG010T	Mighty Small precast gels, 10% Bis-Tris, 12 wells	10 pcs/box
MSG012T	Mighty Small precast gels, 12% Bis-Tris, 12 wells	10 pcs/box
MSG412T	Mighty Small precast gels, 4-12% Bis-Tris, 12 wells	10 pcs/box
MSG420T	Mighty Small precast gels, 4-20% Bis-Tris, 12 wells	10 pcs/box
MSG010F	Mighty Small precast gels, 10% Bis-Tris, 15 wells	10 pcs/box
MSG012F	Mighty Small precast gels, 12% Bis-Tris, 15 wells	10 pcs/box
MSG412F	Mighty Small precast gels, 4-12% Bis-Tris, 15 wells	10 pcs/box
MSGB10	MOPS-SDS Running Buffer Powde	1L *10 pcs/box

Horizontal Electrophoresis Selection Guide

Product Name	Tray Size (w x l cm)	Maximum Sample Capacity	Cooling Option	Buffer volume(ml)	Built-in Power Supply
HE33	7 x 10	32	Yes	250	—
HE99X	15 x 10	30	—	1200	—
	15 x 15	60			
	15 x 20	60			
SUB6	6 x 7.5	32	—	325	—
SUB10	10 x 11.5	80	—	450	—
SUB13	12.8 x 15	112	—	900	—
SUB15	15 x 15	120	—	1200	—
SUB20	20 x 20	160	—	2200	—
SUB20C	20 x 20	160	Yes	2200	—
SUB25	25 x 30	624	—	3000	—
SUB25C	25 x 30	624	Yes	3000	—
SUBHT	15 x 15	120	—	1200	—
HE-PLUS	12.5 x 13	112	—	350	Yes
	12.5 x 6	56			
	6 x 6	8			

The recommended power supply for the above non-powered horizontal units is the Hoefer PS300B.

HE Series Horizontal Agarose Electrophoresis Unit

HE33 Mini Horizontal Unit

- Fast separations—run a 7 x 10 cm gel in as little as 5 minutes
- The clear molded base acts as a heat-sink—simply fill the base with coolant and seal
- Cooling the unit prior to a run allows higher voltages to be applied without generating band distortions or damaging the gel and unit



HE33

HE99X Max Horizontal Unit

- High resolution separation of the fragments 100 bp to 20 kbp
- Three casting kits available—enabling users to run 15 x 20, 15 x 15, or 15 x 10 cm gels in the same unit

Ordering Information

Cat. #	Description
HE33-8-1.5	HE33 Mini Horizontal Unit, Complete
HE33B	HE33 Mini Horizontal Unit, Basic

Basic Unit Includes:

- Buffer Chamber Assembly
- Running and Casting Tray
- Safety Lid w/High Voltage Leads

Complete Unit Includes:

- Basic unit
- 2 pcs 8-well 1.5 mm Combs and comb backs

Cat. #	Description
HE99X-15-1.5	HE99X Max Horizontal Unit, Complete
HE99X	HE99X Max Horizontal Unit, Basic



HE99X Max

Basic Unit Includes:

- Buffer Chamber Assembly
- Safety Lid w/High Voltage Leads

Complete Unit Includes:

- Basic unit
- Casting kit
- 15-well 1.5 mm Combs and comb backs

SUB Series Submarine Gel Electrophoresis Units

Features and Benefits

- **Color-coded and height adjustable combs**—easily identify comb thickness at a glance and control well depth
- **Colored loading strips**—for easy well detection when loading
- **Compact tank**—reduces the buffer volume required to cover the gel, providing greater control over the voltage gradient and run-time
- **UV-transparent running tray**—allows the user to image the gel without risk of damage due to handling
- **Side handles**—for safe and easy transportation around the laboratory

SUB13/SUB15/SUB20&SUB20C/SUB25&SUB25C

- Buffer recirculation ports—may be connected to a peristaltic pump for buffer recirculation during electrophoresis to maintain buffer pH and prevent ionic gradient formation

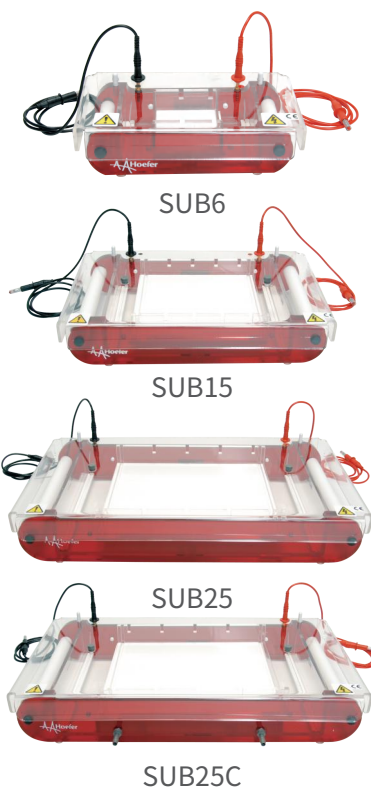
SUB20C/SUB25C

- cooling base—can be connected to a recirculation bath allowing high voltage electrophoretic separations without overheating.

Ordering Information

Cat. #	Description
SUB6	Mini Submarine Gel Unit
SUB10	Mini-Plus Submarine Gel Unit
SUB13	Midi Submarine Gel Unit
SUB15	Standard Submarine Gel Unit
SUB20	Maxi-Standard Submarine Gel Unit
SUB20C	Maxi-Standard Submarine Gel Unit With Cooling Base
SUB25	Maxi-Plus Submarine Gel Unit
SUB25C	Maxi-Plus Submarine Gel Unit with Cooling Base

For more information such as combs, please visit www.hoeferinc.com

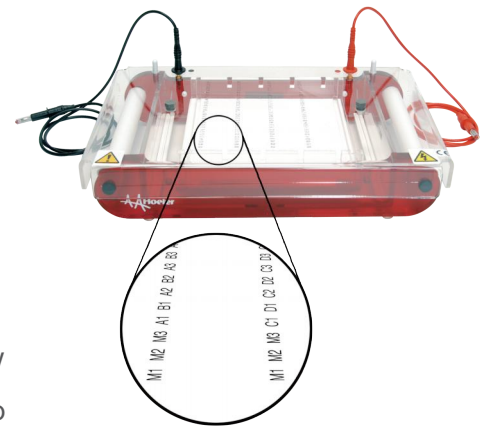


SUBHT High Throughput Submarine Gel Electrophoresis Unit

Ideal for high throughput screening applications like single strand polymorphism (SSP) analysis following PCR

Features and Benefits

- **Fast, Error-Free Loading**—Load an entire 96-well plate using a multi-channel pipette
- **Simplified Analysis**—Fluorescent labels for each sample printed on a UV transparent gel tray allows for instant sample identification (matched to a 96-well plate) during post-run visualization
- **High Throughput**—Run up to 120 samples (96-well plate + 24 control and/or marker samples) in 30 minutes



Ordering Information

Cat. #	Description
SUBHT	High throughput submarine gel electrophoresis unit

Includes:

- Buffer Chamber Assembly
- 30 well combs—4 pcs
- Safety Lid
- Colored Loading Strips
- High Voltage Leads
- Buffer Recirculation Ports—2 pcs
- Fluorescent Labeled Running Tray w/Casting Gates

For more information such as combs, please visit www.hoeferinc.com

Blotting Unit Selection Guide

	Product Name	Transfer Area	Capacity	Buffer Required	Cooling Option	Built-in Power Supply
Semi-dry	TE70XP	14 x 16 cm	Up to 4 Mini Gels	0.5L	N/A	Yes
	TE77XP	21 x 26 cm	Up to 12 Mini Gels	0.5L	N/A	Yes
	TE77X	21 x 26 cm	Up to 12 Mini Gels	0.5L	N/A	—
Tank	TE22	9 x 10 cm	4 Cassettes	1L	Built-In Heat Exchanger	—
	TE42	15 x 21 cm	2 Cassettes with Cooling 4 Cassettes without Cooling	5L	Optional Heat Exchanger	—
	TE62	15 x 21 cm	4 Cassettes	5L	Built-In Heat Exchanger	—

Semi-Dry Transfer

Efficient design that uses minimal buffer to transfer proteins from polyacrylamide gels in less than an hour

Technical Specifications

Transfer Area:

TE70XP	Up to 14 x 16 cm
TE77XP	Up to 21 x 26 cm
TE77X	Up to 21 x 26 cm
Maximum Power Settings.....	30 V, 500 mA, 15 W
Maximum Temperature.....	45°C
Indoor Use.....	4-40°C
Humidity.....	Up to 80%
Unit Dimensions (w x h x d).....	38 x 46 x 9 cm
Safety Certifications.....	EN61010-1, UL61010-1, CSA22.2 1010.1, CE



TE77X



TE70XP/TE77XP

Features and Benefits

- Intelligent built-in power supply (TE70XP and TE77XP)–prevents the stack from overheating by monitoring the transfer status
- Included safety circuit breaker–limits voltage and current from the users power supply, preventing
 - electrical damage to the transfer unit
- Requires minimal current–does not generate excessive heat that can dry out the transfer stack and halt transfer or damage transfer units
- Durable iridium oxide and stainless steel electrodes–allow for contamination free, consistent transfer
- Vented electrodes–prevent build up of bubbles which may impair transfer
- Minimal buffer requirements–reagent cost and preparation time are reduced

Ordering Information

Cat.#	Description
TE70XP	Semi-Dry Transfer Unit with Built-In Power Supply
TE77XP	Large Semi-Dry Transfer Unit with Built-In Power Supply
TE77X	Large Semi-Dry Transfer Unit

Wet Tank Transfer

Quickly and evenly transfers proteins and nucleic acids from polyacrylamide or agarose gels onto nylon, nitrocellulose, or PVDF membranes

Features and Benefits

- Superior design provides a uniform electric field—the key to even transfers
- Superior tank design allows the cassettes to apply equal pressure across the stack—prevents gel distortion
- Color coded, easy to assemble cassettes—ensures proper orientation during transfer

TE22 Mighty Small Transfer Tank

- Transfers as many as four small gels, up to 9 x 10 cm in less than an hour
- Built-in alumina-covered cooling channel provides excellent temperature control with no more than a 5°C temperature increase during a typical run

TE42 Standard Transfer Tank

- Up to four 15 x 21 cm gels (without cooling); Up to two 15 x 21 cm gels (with cooling)
- Optional TE47 heat exchanger—provides excellent buffer temperature control when used with an external cooling water bath.

TE62 Standard Transfer Tank with Cooling Chamber

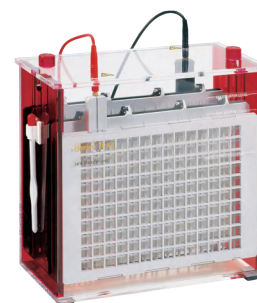
- Up to four 15 x 21 cm gels or sixteen 7 x 10 cm gels
- Built-in ceramic heat exchanger—provides excellent temperature control when used with an external cooling water bath

Ordering Information

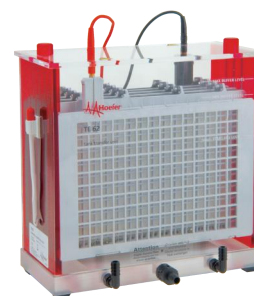
Cat. #	Description
TE22	Mighty Small Transfer Tank
TE42	Standard Transfer Tank
TE62	Standard Transfer Tank with Cooling Chamber



TE22



TE42



TE62

Western Blotting System Packages

Mini Electrophoresis Blotting System with Transfer Tank

Cat. #	Description
326223	Mini Transfer Tank Combination Package
	Package Includes:
SE260-10A-1.0	Mighty Small II Mini Deluxe Vertical Unit
TE22	Mighty Small Mini Transfer Tank
PS300B	300 V, 500 mA, 90 W Power Supply



Standard Electrophoresis Blotting System with Transfer Tank

Cat. #	Description
SE600X-15-1.5	Deluxe Dual Cooled Vertical Unit
TE62	Standard Transfer Tank with Cooling Chamber
PS300B	300 V, 500 mA, 90 W Power Supply



Standard Electrophoresis Blotting System with Semi-Dry Unit

Cat. #	Description
SE600X-15-1.5	Deluxe Dual Cooled Vertical Unit
TE77XP	Large Semi-Dry Transfer Unit with Built-In Power Supply
PS300B	300 V, 500 mA, 90 W Power Supply



Standard Electrophoresis Blotting System with Semi-Dry Unit

Cat. #	Description
SE660-15-1.5	Tall Standard Dual Cooled Vertical Electrophoresis Unit
TE77X	Large Semi-Dry Transfer Unit
PS300B	300 V, 500 mA, 90 W Power Supply



Power Supplies

Features and Benefits

- Constant voltage or constant current mode with automatic crossover
- The voltage accuracy is $\pm 1\%$, and the current accuracy is $\pm 2\%$
- Four sets of 4 mm output jacks
- Continuous runs or 999 minute timer
- Automatic recovery after power failure
- Open circuit detection
- Short circuit protection



PS300B

PS300B 300 Volt Power Supply

- Maximum output of 300 V, 500 mA, and 90 W
- Ideal for running and transferring mini protein gels
- Supports DNA/RNA electrophoresis, SDS-PAGE, and native PAGE applications

PS200HC 200 Volt High Current Power Supply

- Maximum output of 250 V, 2500 mA, and 200 W
- Ideal for large electrophoretic blotting applications and for low voltage electrophoresis runs
- Supports SDS-PAGE, native PAGE, western blotting, and DNA/RNA electrophoresis applications



PS200HC

PS600 600 Volt Power Supply

- Maximum output of 600 V, 750 mA, and 150 W
- Best capabilities and output for running and transferring both mini and midi protein gels
- Supports IEF gel, SDS-PAGE, native PAGE, western blotting, and DNA/RNA electrophoresis applications



PS600

Ordering Information

Cat.#	Description
PS300B	300 Volt Power Supply, Universal VAC
PS200HC	250 Volt High Current Power Supply, Universal VAC
PS600	600 Volt Power Supply, Universal VAC

Western Blotting Tie-in Lab Products & Solution

SDS-PAGE Electrophoresis



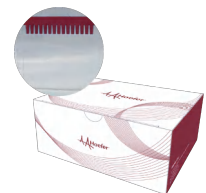
Vertical Unit
(SE250/SE260/SE400 and
SE600 Series)



PS300B Basic
Power Supplies



Multiple-Gel Casters
Gradient Makers



Mighty Small
Precast Gels



Western Blotting



Wet Tank Transfer
(TE22/TE42/TE62)



miniVE Integrated Vertical
and Blotting Unit



Semi-Dry Transfer



PVDF & NC Membranes



Imaging Systems



Gel Doc System
White/UV/Blue



Gel Doc System
White/UV/Blue



Gel Doc and Chemi
& Fluo System
White/UV/Blue
Hi LED(RGB/IR/FR/NIR)



Gel Doc and Chemi
& Fluo System
White/UV/Blue
Hi LED(RGB/IR/FR/NIR)

FPGD2 FlexPro Gel Doc imaging System

Features and Benefits

• Powerful

A groundbreaking 5m pixel camera gives exquisite pixel resolution and unrivalled sensitivity in its class. FPGD2 uses an f/1.2 motor-driven zoom lens to enable perfect gel or blot-size imaging. The maximum viewing area is 20 x 24cm, which is very large for such a small, compact unit.

• Flexible

Internal lighting includes a UV transilluminator option for working with DNA gels, stain free and autorads analysis. The overhead LED white lighting is included as standard for easy sample positioning and focusing.

• Versatile

The FPGD2 has been designed for stain free applications. Its camera enables the sample to be exposed for extended periods. Safely excise your DNA bands from an agarose gel with the darkroom door open using the optional safety shield protecting the user when working with UV.

• Intuitive

Images are saved directly to USB or network for easy transfer. Quickly generate quantitative data with GelTools analysis software. FPGD2 comes with unlimited copies of GelTools.



Specifications

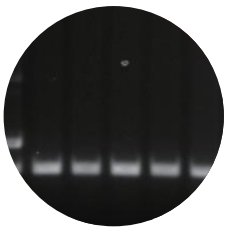
Image Resolution	5MP
Bit Depth	12/16 Bit
Dynamic Range	3.6/4.8 OD
Lens	8-48mm F/1.2
Sample Size	20x24cm
Sensor	1/2.5 Inch
Dimensions (HxWxD) mm	750x310x450
Weight (kg)	20
Power Input (V)	100-240
Touch Screen Size	7"
Memory	80GB
OS	Windows 10 Enterprise LTSC

The FPGD2 imaging system includes:

- The mainframe equipment
- UV Transilluminator (20 x 20cm; 302nm)
- Visible light converter (Silver Stain, Coomassie Blue)
- UV to Blue Light converter, suitable for 'safe' dyes (GFP, SYBR Green, SYPR Gold, SYBR Safe, SYPRO Ruby)

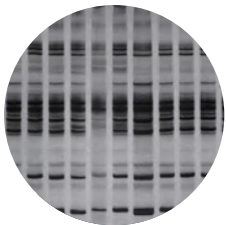


Application



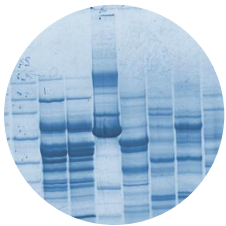
DNA

With the FPGD2, you can use the UV transilluminator to capture images of DNA gels stained with Ethidium Bromide.



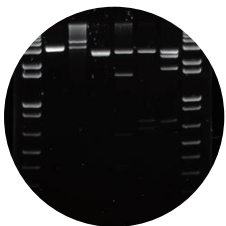
Autorad Film

Featuring a 5 million pixel resolution camera ideal for capturing images requiring great detail. This is especially true when looking for separation between bands or spots. Capturing high-quality images of Autorads is one of the strengths of the FPGD2.



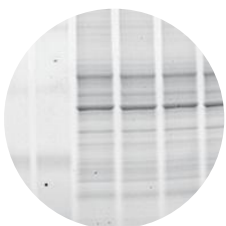
Visible Light

With the visible light converter, the FPGD2 can be used to view gels stained with, e.g. Silver stain and Coomassie blue. You can also view tissues, slides and films.



Blue Light

A blue light conversion screen is available for applications requiring blue light excitation, e.g., "Safe" dyes such as GFP, SYBR®Green, SYBR Gold, SYBR Safe, SYPRO Ruby, Safe View and Flamingo.



Stain Free

FPGD2 is capable of capturing stain free images automatically. Stain free technology removes extra steps and long delays from staining with dyes such as Coomassie blue.

FXGD3 FlexSecure Gel Doc imaging System

Features and Benefits

• Sensitive

Featuring a high-resolution 5 million pixel camera and motor driven zoom lens, a FXGD3 gives you outstanding images with incredible spatial resolution of both small and large gels. With a FXGD3 you'll generate images you can trust of close bands or spots.

• Flexible

For imaging ethidium bromide gels, you can choose the high-performance UV transilluminator and you can opt for the blue light converter screen to view safe dyes or choose a white light converter screen for imaging visible stains. Both sit neatly over the transilluminator to give you the right lighting for your application.

• Simple

Fully integrated with application-driven GelSys software, you can detect nanogram quantities of DNA and proteins every time with this sensitive imager.

• Secure

You can save and print your publication quality results, and with full audit trails, your data is fully secure when used in a 21 CFR Part 11 compliant environment. IQ/OQ/PQ documentation is available allowing the user to verify that a system meets defined installation, quality and performance specifications.

• Future-Proof

With our guarantee of free software upgrades and unlimited copies of GelTools analysis software not just today but throughout your system's life, your FXGD3 will always have the latest imaging and analysis capabilities. FXGD3 can be upgraded to a Chemi FX system for imaging chemiluminescence and western fluorescence.



The FXGD3 imaging system includes:

- The mainframe equipment
- UV Transilluminator (25x30cm; 302nm)
- Visible light converter (Silver Stain, Coomassie Blue)
- UV to Blue Light converter, suitable for 'safe' dyes (GFP, SYBRGreen, SYPRGold, SYBRSafe, SYPRORuby)

Specifications

Image Resolution	5MP
Effective Resolution	15.1MP
A/D	12/16 bit
Greyscale	65,536
Lens	Zoom F1.2 with lens feedback option (motor driven)

Specifications

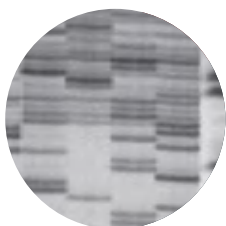
Filter Wheel	7-Position Motor Driven
UV Filter	Yes
Use with external PC and Printer	Yes (not included)
Lighting (included)	Epi LED White Lights Epi UV Short, Medium and Long wave Visible Light Converter (33x31cm) White light pad for visible stains (20x14cm)
Lighting (optional)	UltraBright LED Blue Light Transilluminator (20x16cm) 20x20cm or 25x30cm Short. Medium or Long wave or dual wavelength
Max Image Area	325x241mm
Min Image Area	56x42mm
Dimensions(WxHxD)	570x840x540mm
Weight	37kg
Power input (V)	100-240

Application



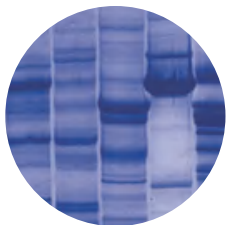
Blue Light

To view safe dyes that require blue light excitation such as SYBR® Safe, SYBR® Gold, SafeView™, GelGreen™ and SYPRO® Ruby in the FXGD3, you can use a blue light converter screen or blue light transilluminator.



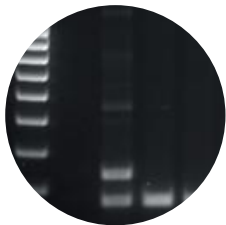
Autorads

Featuring a 5 million pixel camera, the FXGD3 is ideal for capturing all the details from an image. You can even resolve close bands and spots on autorads of your sequencing gels.



Visible Light

With the visible light converter screen, you can use the FXGD3 to view protein gels stained with Coomassie blue, Texas Red and silver stain. You can even image tissues and slides.



DNA and RNA

With the FXGD3 you can use the slide in and out UV transilluminator to visualise DNA or RNA stained with ethidium bromide, SYPRO® or SYBR® dyes.

Chemi FX multi fluorescence and chemiluminescence imaging systems

The Chemi FX6/FX9 is the perfect system for gel documentation, imaging and analysis in your lab. The in-house designed, FREE software with unlimited licences ensures you can detect chemiluminescence effectively and efficiently.

This system is perfect for imaging multiple sample types and sizes, from fluorescence 1D and 2D gels to chemiluminescent blots. Utilising the GelSys automatic control software, with free updates, ensures your system remains on the cutting edge of technology, driven from a database containing hundreds of capture protocols. With a range of lighting and manual control options, image your way with the Chemi FX6/FX9.



Features and Benefits

• Accurate

Combining cooled, high resolution camera and unique optical imaging means your Chemi FX generates true-to-life images not just digitally enhanced ones. With a Chemi FX you'll resolve close chemi and fluorescent bands or spots even on complex gels and know they're real.

• Sensitive

The Chemi FX systems are multi-application powerhouses for accurately imaging fluorescence, multiplex westerns, agarose DNA gels, visible protein gels, stain free gels and chemi blots. Fully integrated with computer controlled intuitive GelSys software, you can utilise the impressive 4.8OD dynamic range of a Chemi FX to detect femtogram quantities of DNA and proteins time after time.

• FAST

Featuring the option to use a range of UV, blue, green, red, far red and infra-red LEDs which are up to 200 times brighter than standard LEDs, the Chemi FX range gives you fast exposure and brilliant multiplex fluorescence images. See our website for latest developments.

• Future-Proof

With our guarantee of free software upgrades not just today but throughout your system's life, your Chemi FX will always have the latest imaging capabilities.

Application

- Chemiluminescence Western blots
- DNA or RNA stained with ethidiumbromide, SYPRO, SYBR and "SAFE" dyes on agarose gels
- Coomassie blue or silver stained proteins on acrylamide gels

Application

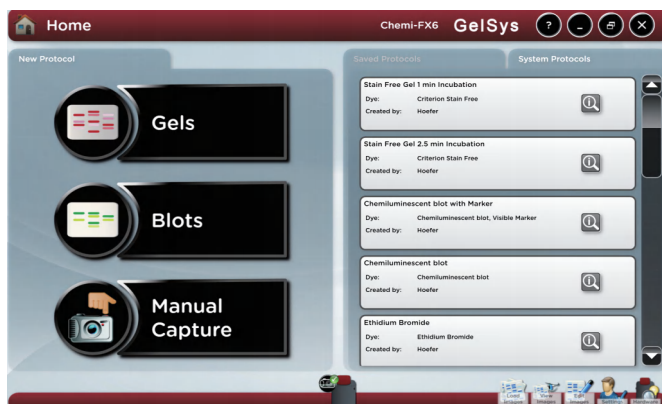
- Fluorescent gels or blots stained with Qdots, DyLight, Alexa Fluor, Cy Dyes, and LI-COR IR dyes
- Auto-rads
 - Bioluminescence
- Stain free gels
 - Plant imaging
- GFPs
 - In vivo imaging
- Colonies or plaques on agar plates
 - 2D gels

Specifications

SYSTEM	Chemi FX	Chemi FX6 FX6PRO	Chemi FX9 FX9PRO
Image Resolution	4MP	6 MP	9 MP
Effective Resolution	16MP	18 MP	27 MP
A/D	16 bit	16 bit	16 bit
Greyscale	65,536	65,536	65,536
Dynamic Range OD	4.8	4.8	4.8
Quantum Efficiency (@ 425nm)	73%	73%	73%
Lens (motor driven)	F1.2 zoom	F0.95 F0.80	F0.95 F0.80
Stage	Fixed	Moving	Moving
Filter Wheel (7-position motor driven)	All fluorescence applications	All fluorescence applications	All fluorescence applications
UV Filter	Yes	Yes	Yes
Use with external PC and Printer	Yes	Yes	Yes
LIGHTING			
Epi LED White Lights	Yes	Yes	Yes
HiLED (UV, blue, green, Red, far red and infra-red)	choose up to 4	choose up to 4	choose up to 4
Visible Light Converter	Optional	Optional	Optional
Blue Converter Screen	Optional	Optional	Optional
Slide-out UV Transilluminator 302nm (20cm x 20cm)	Optional	Optional	Optional
Edge Lighting Unit	No	Optional	Optional
DIMENSIONS			
Max Image Area (cm)	30.5×22.7	32.3×25.6 34.5×27.6	32.3×25.6 34.5×27.6
Min Image Area (cm)	5×3.8	15×11.8 15.6×12.5	15×11.8 15.6×12.5
Dimensions(WxHxD,cm)	57x84x45	57x99x55	57x99x55
Weight (Kg)	Approx. 37	Approx. 45	Approx. 45
Power Input (V)	100-240	100-240	100-240

GelSys Image Capture Software

The GelSys image acquisition software is provided free of charge with Hoefer's ChemiFX series, FPGD2, and FXGD3 systems. It is specifically designed to work seamlessly with the GelTools analysis software. The workflow is simple and intuitive, guiding you to quickly acquire high-quality images. A full complement of digital tools is available to assess, view, and export your images.

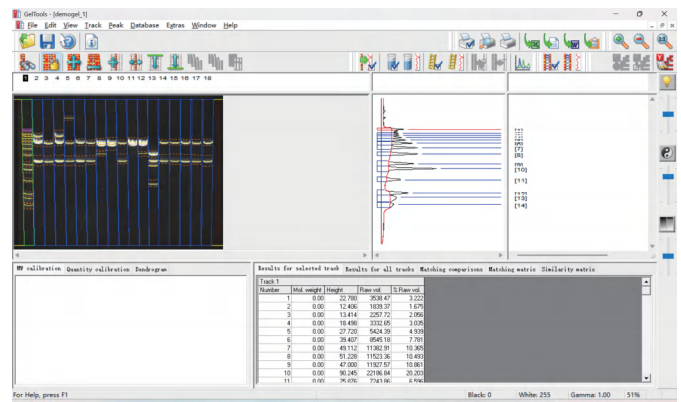
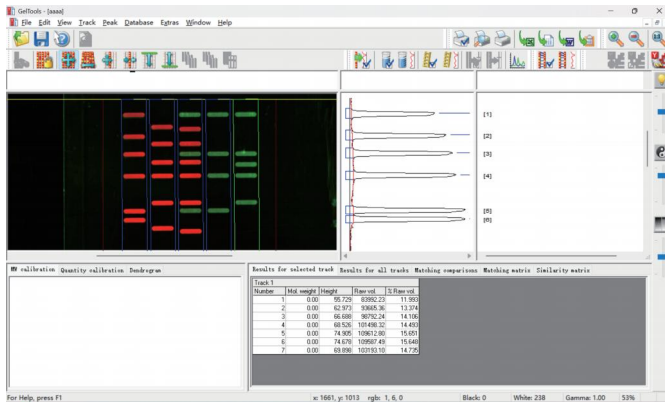


Features:

- Automatic Acquisition Mode: Utilizes an extensive database to automatically configure the optimal imaging protocol, preventing image oversaturation.
- Manual Acquisition Mode: Allows users to customize their imaging needs in manual mode using GelSys.
- Multiplex Functionality: Captures images of up to 5 different fluorescent labels simultaneously, which can be combined into multicolor or single-color images.
- Automatically select the best light source and filter for you to capture the perfect image.
- Single image and series image capture.
- Multiplex fluorescence acquisition.
- Visible and colour marker imaging.
- AutoExpose Area feature for detecting weaker bands.
- Quick Quantification Feature: Facilitates rapid quantification of protein and DNA bands.
- Export Capabilities: Allows image export in SGD, TIFF, JPEG, or BMP formats.
- Audit Trail Functionality: Fully complies with the 21 CFR Part 11 standards.

GelTools Analysis Software

GelTools is a flexible and powerful image analysis software for analyzing gels, blots, and more. Whether using fully automated or manual modes, complex analysis is made simple. By choosing GelTools, you not only get a robust tool but also enjoy lifetime free upgrades of the software and unlimited copies at no additional cost.



GelTools analysis software offers many features, including:

- Automatic lane detection: Automatically identifies lanes and allows manual adjustments for precise lane delineation.
- Background subtraction
- MW/BP calculation
- Quantity calibration
- Single and multichannel image analysis
- Colony counting
- Spot blot
- Western blot normalisation
- Reports

Tri-coded Sample Storage Tube

Features and Benefits

- Manufactured in clean workshop complying with GMP 8 and certified with ISO 9001 and 13485
- Strict quality control, Tri-Coded system, providing readability and uniqueness, and unequalled sample audit traceability
- Laser-etched code on the tube bottom and side, easy to be read, scratch resistant
- Super-toughened materials with standing temperatures from -196°C to 120°C for various storage condition
- Same material for cap and tube, effectively preventing the uneven expansion during freeze-thaw cycles
- Non-silicone seal with unique thread to prevent over-tightening
- RNase / DNase and pyrogen free
- Direct code-reading with the tubes on rack with SBS format



Specifications

	0.5 ml	0.75 ml	1.0 ml	2.0 ml
Max. Working Volume (ml)	0.58	0.77	1.15	2
Tube Height (mm)	26.82	31.2	46.59	38.43
Tube Height with Cap (mm)	29.58	34.1	49.34	43.12
Inner Diameter (mm)	6.5	6.5	6.5	9.6
Outer Diameter with Cap (mm)	8.7	8.7	8.7	12.8
Center to Center (mm)	9	9	9	13.5
Minimum temperature (°C)	-196	-196	-196	-196
Format	96-format	96-format	96-format	48-format
2D-code on base	√	√	√	√
1D Linear Barcode on side	√	√	√	√
1D Linear Barcode on rack	√	√	√	√
Box Dimensions (L×W×H,mm)	128×85×36	/	128×85×54	128×85×48

Ordering Information

Cat.#	Description	Package
ST1-0050-0	0.5ml Tri-coded, Bulk	960/bag, 1bag/case
ST1-0050-1	0.5ml Tri-coded, Rack	96/rack, 10racks/case
ST1-0075-0	0.75ml Tri-coded, Bulk	960/bag, 1bag/case
ST1-0075-1	0.75ml Tri-coded, Rack	96/rack, 10racks/case
ST1-0100-0	1.0ml Tri-coded, Bulk	960/bag, 1bag/case
ST1-0100-1	1.0ml Tri-coded, Rack	96/rack, 10racks/case
ST1-0200-0	2.0ml Tri-coded, Bulk	480/bag, 1bag/case
ST1-0200-1	2.0ml Tri-coded, Rack	48/rack, 10racks/case
ST2-0050-0	0.5ml Editable, Bulk	960/bag, 1bag/case
ST2-0050-1	0.5ml Editable, Rack	96/rack, 10racks/case
ST2-0075-0	0.75ml Editable, Bulk	960/bag, 1bag/case
ST2-0075-1	0.75ml Editable, Rack	96/rack, 10racks/case
ST2-0100-0	1.0ml Editable, Bulk	960/bag, 1bag/case
ST2-0100-1	1.0ml Editable, Rack	96/rack, 10racks/case
ST2-0200-0	2.0ml Editable, Bulk	480/bag, 1bag/case
ST2-0200-1	2.0ml Editable, Rack	48/rack, 10racks/case
ST4-0050-4	Cryo Rack, Suitable for 0.5ml Tube	10racks/case
ST4-0100-4	Cryo Rack, Suitable for 1.0ml Tube	10racks/case
ST4-0200-4	Cryo Rack, Suitable for 2.0ml Tube	10racks/case
ST5-0050-0	0.5ml, bottom 2D coded, Editable on side, Bulk	960/bag, 1bag/case
ST5-0050-1	0.5ml, bottom 2D coded, Editable on side, Rack	96/rack, 10racks/case
ST5-0075-0	0.75ml, bottom 2D coded, Editable on side, Bulk	960/bag, 1bag/case
ST5-0075-1	0.75ml, bottom 2D coded, Editable on side, Rack	96/rack, 10racks/case
ST5-0100-0	1.0ml, bottom 2D coded, Editable on side, Bulk	960/bag, 1bag/case
ST5-0100-1	1.0ml, bottom 2D coded, Editable on side, Rack	96/rack, 10racks/case
ST5-0200-0	2.0ml, bottom 2D coded, Editable on side, Bulk	480/bag, 1bag/case
ST5-0200-1	2.0ml, bottom 2D coded, Editable on side, Rack	48/rack, 10racks/case

*Cat. number without suffix refers to transparent lid, red cap, and white base.

Multi-color caps and racks for customization.



Barcode Reader

Hoefer Barcode Reader, combining a high-resolution, camera-based imaging system, providing a very effective reading of whole SBS rack tubes. With an integrated sample management software, it is an ideal tool for precise identification of 2D codes and sample traceability, can meet the requirements of sample storage of any lab.



Features and Benefits

- Decode a whole rack of tubes in less than 1 second, capable of reading whole rack of tubes or a single tube
- Direct USB power supply and data transfer via Type C or USB3.1 ports
- Use with any 2D-coded tubes in SBS format rack, available for 24, 48, 96 and 240 format SBS racks
- Data output choice with Excel, CSV, text, TCP/IP, ODBC, etc
- Remote control via TCP/IP, allowing synchronized code-reading in multi-computers
- Compact size, suitable for small workbench operation
- High resolution camera, to provide clearer pictures and more accurate reads

Technical Parameters

Camera Resolution	12 MegaPixel
Linear Barcode Reader	Optional (70-4012) – Plug directly into PC
Communication	Type C&USB
Decodable Formats	2D Data Matrix®, QR Codes, ISO 16022, Square and Rectangular Format, ECC 200, 0 - 20 grid sizes, White on Black and Black on White, Numeric and Alphanumeric
Tube Formats	Almost all tubes in SBS format rack. Either 24, 48, 96, 240 or 384-formats.
Total Read Time	< 0.5 second
Operating Systems	Windows7, Windows8, Windows10, Windows11
Dimension (W×L×H)	147mm×147mm×200mm
Weight	1000g

Ordering Information

Cat.#	Description
ST-FBR01	Whole Rack Barcode Reader
ST-FBR02	Barcode Reader with 1D Side Scan

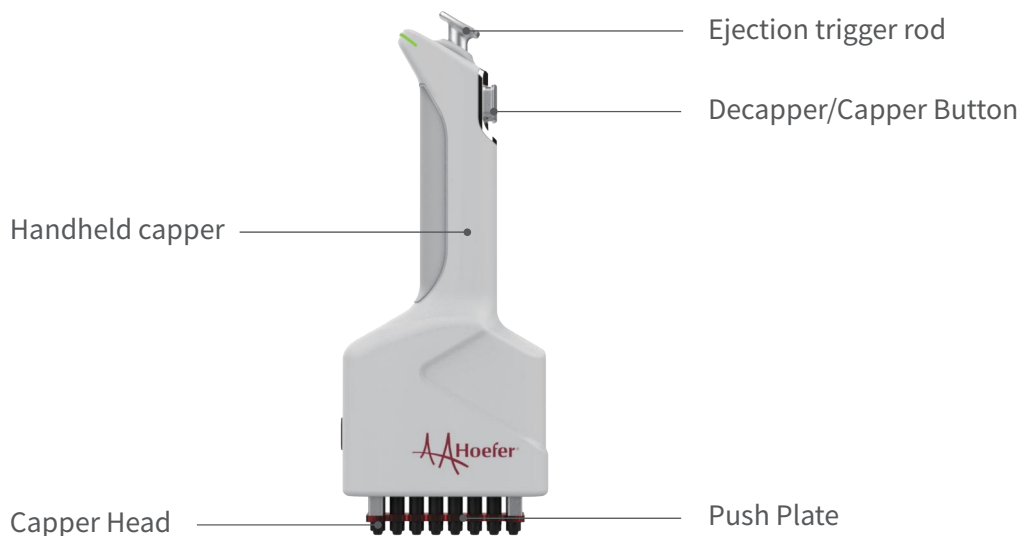
HandheldCap 8/6 Capper/Decapper

User-friendly and lightweight, Hoefer HandheldCap8/6 can quickly cap/decap 8-ch or 6-ch Hoefer sample storage tubes, effectively reducing the work load of operators as a solution that takes into account the transition from manual to automated systems.



Features and Benefits

- Automatic capping and decapping within 10 seconds, improving the processing throughput by handheld.
- User-friendly, lightweight and ergonomically designed
- Magnetic contact charging for longer battery life and faster charging times
- Portable and convenient, a better choice for sample treatment in any laboratory
- Desktop stand for easy handling, firmly attached



Ordering Information

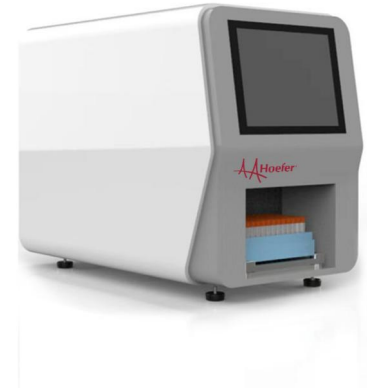
Cat.#	Description
ST-HCM8	HandheldCap 8 Capper/Decapper
ST-HCM6	HandheldCap 6 Capper/Decapper

AutoCap 96/48 Capper/Decapper

Designed for increased throughput and optimized workflow, Hoefer™ AutoCap96/48 can be used for capping/decapping whole SBS-format tubes, making the system ideal for lab automation management or biological sample storage.

Features and Benefits

- Cap/decap a whole SBS-format rack of tubes within 1 min
- Compatible with a wide range of sample storage tubes of different type and brands
- Interchangeable carriers for switching tube format in less than two minutes
- Quick setup and touch screen operation, an ideal use for fully-automated workflow integration
- A better choice for sample storage management in any high-throughput laboratories



Specifications

- Dimensions: 260mm (W) x 350mm (L) x 460mm (H)
- Weight: 20 kg Max. Wattage: 120W
- Compatible with a variety of sample tubes, including Hoefer, Fluidx, etc.
- Positioning regulation, positioning error: $\pm 0.05\text{mm}$
- Emergency stop switch in case of emergency
- Interface for third-party equipment communication
- Operating Conditions: 220V, 50Hz
- Temperature: 0°C to 40°C
- Humidity <85% RH

Ordering Information

Cat.#	Description
ST-ACM96	AutoCap 96 Capper/Decapper
ST-ACM48	AutoCap 48 Capper/Decapper

AutoLaser Marking Machine



Features and Benefits

- Laser-etch tri-code sample tubes with a maximum of 1200 tubes per hour, user defined with his own information
- Customize the code using characters, numbers, letters, barcodes, 2D codes, graphics, etc
- Laser-etched code with high contrast and readability, simply recognized with barcode reader
- Open communication interface for integrating into existing software. Data can be imported externally without manual input
- Compatible with the entire range of Hoefer sample storage tubes
- Simplify the sample handling process by solving issues of paper labels that are prone to contamination, not waterproof, and fall off at low temperatures

Technical Parameters

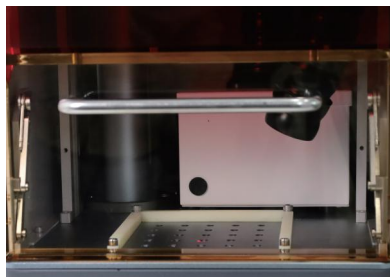
Dimension	W×L×H	570mm×485mm×650mm
Optical Parameters	Marking range	110mm×110mm
	Standard marking line width	0.06mm (depend on the material)
	Minimum character height	0.2mm
Cooling system	Cooling method	forced air cooling
Controlling Unit	IPC	I5-6200 main board, 4GMemory, 128G drive, touch screen
	System power supply	1.5KW/AC220V/50Hz The voltage fluctuation range is $\pm 5\%$. If it exceeds the fluctuation range, a voltage regulator device needs to be equipped.
Operating environment	Grounding	Class D [grounding resistance 100 or less]
	Ambient temperature	10~35°C
	Ambient humidity	$\leq 90\%$
	Vibrate	0.98m/s ² {0.1G} or less, 10~60Hz. During transportation: 4.9 m/s ² {0.5G} or less.
	Dust	Less 0.20mg/m ³
	Mist	Not allow
	Condensation	Not allow

Ordering Information

Cat.#	Description
ST-ATL02	Multi-Channel AutoLaser Marking Machine

Smart TubeLaser

The Smart TubeLaser offers precise tube marking, replacing traditional labels with permanent laser etching that is resistant to fading and peeling. Its adaptable coding design allows for personalized customization, making it ideal for laboratory environments. By ensuring superior readability and traceability of your samples, the Smart TubeLaser significantly enhances both efficiency and safety in your lab.



Features and Benefits

Laser Engraving

Utilizes advanced laser technology to deliver high-quality, precise markings.

Permanent Marking

Provides scratch-resistant, low-temperature-resistant, and durable markings, eliminating the risks of peeling, damage, or loss.

Rapid Engraving

Capable of engraving 12 cyrotubes in under 10 seconds.

Open Communication Interface

Integrates seamlessly with existing software systems and supports the import of external data.

Customizable Content

Offers flexibility to engrave characters, numbers, letters, barcodes, QR codes, graphics, and more.

Desktop Design

Compact and highly integrated, making it ideal for small-scale cyrotubes and shipment vials in laboratory settings.

Differentiated Information Etching

Supports the engraving of both individual and batch-specific information on cyrotubes.

Compatibility

Fully compatible with Hoefer's extensive range of editable tubes in various specifications.

Technical Parameters

Dimensions	W×L×H	340 mm X 420 mm X 620 mm
Laser parameters	Laser	Fiber Laser
	Laser Wavelength	1064nm
	Nominal Average Output Power	20W
	Positioning Speed	F=160mm, ≤7000mm/s
Optical Output Characteristics	Focus Lens	F=160 mm Standard
	Marking Area	110 mm × 110 mm
	Standard marking line width	0.06mm (depending on material)
	Minimum Character Height	0.2mm
Cooling System	Cooling method	Air Cooling
	Power Supply	1KW/AC220V/50Hz, voltage fluctuation
Operating Environment	Grounding	The grid ground wire complies with
	Ambient Temperature	0~40°C
	Ambient Humidity	30%≤RH≤85%
	Vibration	Foundation amplitude less than 50μm;
	Dust	less than 0.20mg/m ³
	Oil Mist	Not allowed
	Condensation	Not allowed

Sample Storage Solutions

Streamline your lab operations with Hoefer's advanced sample storage solutions—ensuring secure, efficient, and automated management of your critical samples.



Sample Storage Tubes



Barcode Reader



HandheldCap
Capper/Decapper



AutoCap
Capper/Decapper



CHI JI TECHNOLOGY CO., LTD.

企積科技有限公司

Sales Contact: Melody Chen

Mobile: 0956-493-336

Tel: 07-6936868

Procurement service available

Lead time: 2 months